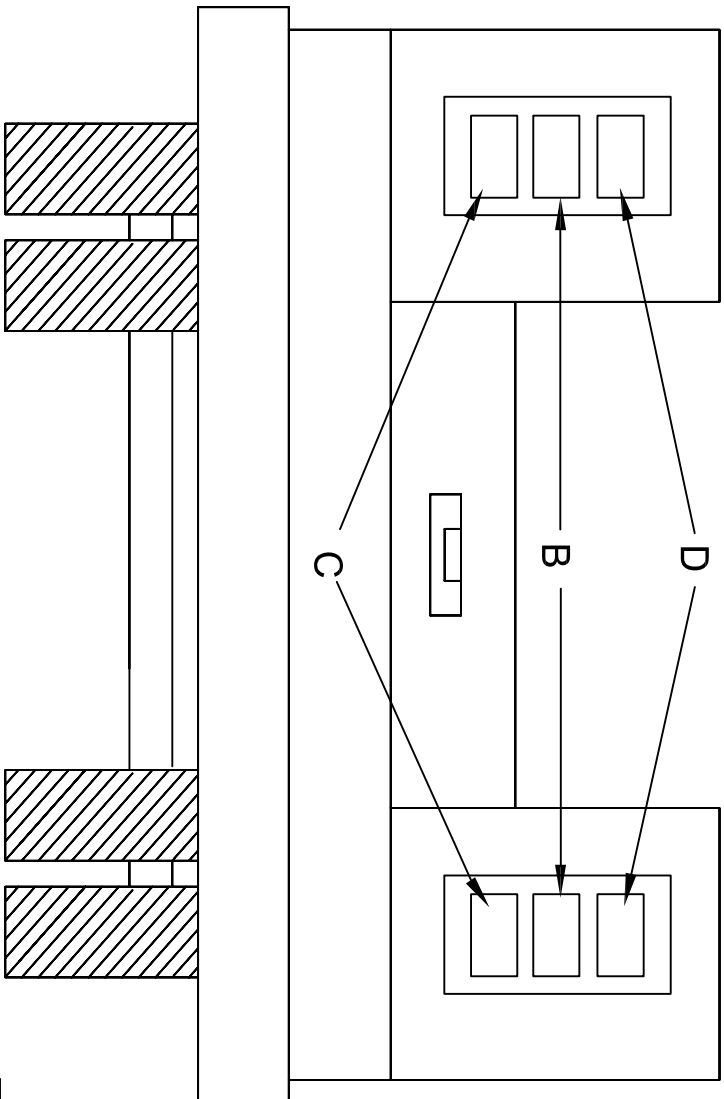


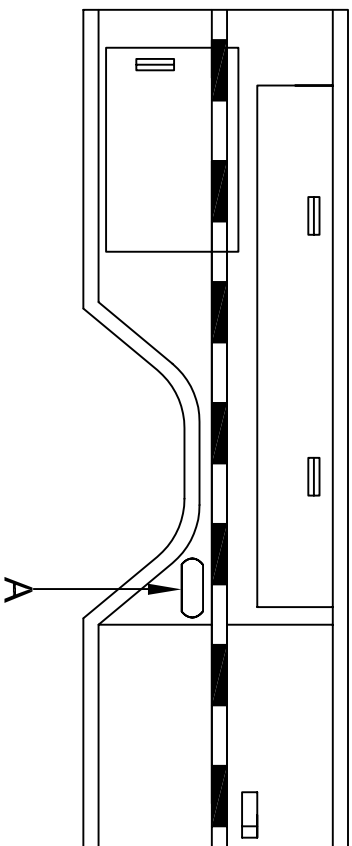
REAR VIEW



The purpose of this drawing is to show locations for Crew Cab Body Lighting, Whelen part # PADOTSYS5.

- A. LINZ6AD Amber Warning Light, grommet mounted, one each side.
 - B. M6BUD Back up Lights.
 - C. M5BTTD Stop / Tail / Turn Lights.
 - D. M6AD Amber Warning Lights.
- Note: Items B, C, & D are Flush mounted in Black Flange Housing #11-486152-000.**

Curb Side



PA DEPARTMENT OF TRANSPORTATION

Crew Cab Body Lighting

REVISIONS			Crew Cab Body Lighting			
NO.	DATE	BY	DRAWN BY	TOD	SCALE	EQN-120M
1					N/A	
2			DATE 09/28/11	CHK'D BY DMA		
3						